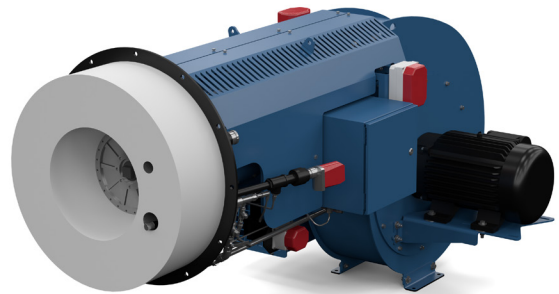


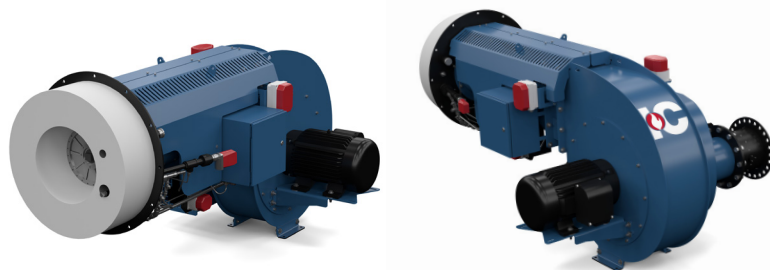
SBR-5G SBR-5LG

Ultra Low-NOx Burner



SBR-5G
Gas Only
8.4 - 21.0 MMBtu
250 - 500 BHP

The SBR-5 series is designed for a variety of boiler types such as firetubes, heaters, and watertubes. Capable of less than 5 ppm NOx emissions with FGR, the SBR-5 features a unique firing head design to achieve controlled combustion, leading to low emissions with 3% O₂. Advanced technology allows the SBR-5 to offer Ultra-Low NOx, low CO emissions and up to 6:1 turndown on natural gas.



Standard Equipment

- 120/1/60 Control circuit, various motor voltages
- Panel signal lights: power on, main fuel, ignition, and flame failure
- Burner-mounted junction box with remote panel
- Combustion air proving switch
- Main shutoff fuel valves
- Gas-Electric ignition
- Electronic parallel positioning with capacity control

Series Features

S = STANDARD

O = OPTIONAL

N/A = NOT AVAILABLE

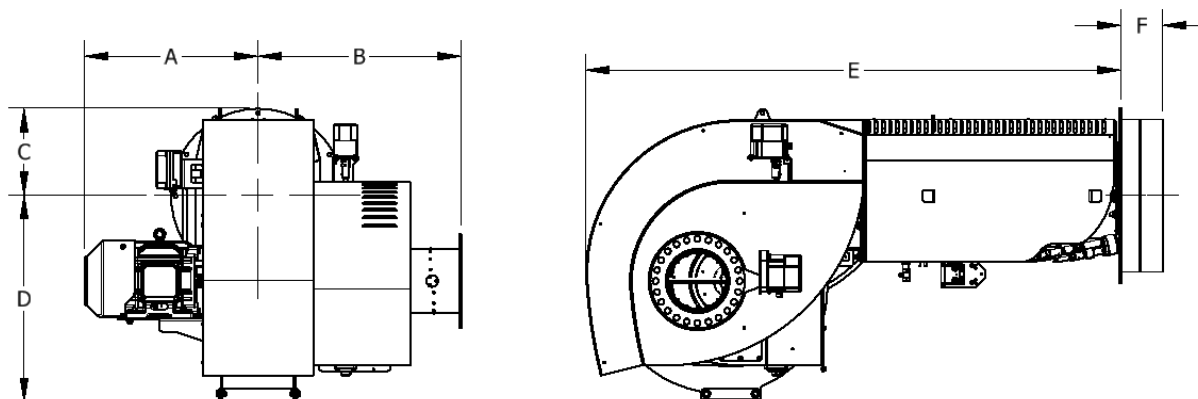
	200	250	300	350	400	500
Flame Safeguard	S	S	S	S	S	S
Self-Check Flame Safeguard	O	O	O	O	O	O
3600 RPM Combustion Fan	S	S	S	S	S	S
Full Modulation Firing	S	S	S	S	S	S
Parallel Positioning System	S	S	S	S	S	S
Dry Oven	S	S	S	S	S	S
O ₂ Trim	S	S	S	S	S	S
Variable Frequency Drive (VFD)	O	O	O	O	O	O
High and Low Gas Pressure Switches	S	S	S	S	S	S
Normally Open (N.O.) Vent Valve or Leakage Detection	S	S	S	S	S	S
Main Gas Regulator and (2) Gas Shutoff Cocks, (2) Automatic Main Shutoff Valves	S	S	S	S	S	S
Gas Flow Control Valves Mounted on Burner Piping	S	S	S	S	S	S

Capacities and Ratings

BURNER MODEL	FRAME SIZE	GAS INPUT (MBH)	BHP @ 80% EFF.	MOTOR HP	GAS PRESSURE REQUIRED (PSI)	RECOMMENDED FURNACE DIAMETER	RECOMMENDED FURNACE LENGTH	FURNACE PRESSURE
SBR5G-84	3	8,400	200	15	5	27	120	3.5
SBR5G-105	3	10,500	250	20	5	34	128	2.7
SBR5G-126	3	12,600	300	25	5	34	134	3.7
SBR5G-147	4	14,700	350	30	5	37	135	3.7
SBR5G-168	4	16,800	400	40	5	37	143	3.6
SBR5G-210	4	21,000	500	40	5	45	146	4.3

Notes:

- For values outside guidelines, connect with factory to evaluate possibilities of usage of SBR-5
- SBR-5G Elevation is 0-2000
- SBR-5G Ambient Temperature consists of 60~100 (°F)
- SBR-5G NOx (ppm, @3% O2) Burning Natural Gas is ≤30
- SBR-5G NOx (ppm, @3% O2) Burning #2 Fuel Oil is uncontrolled
- SBR-5G CO (ppm @3% O2) Burning Natural Gas and #2 Fuel Oil is ≤100
- SBR-5G Turndown Burning Natural Gas is Up to 6:1
- SBR-5G Operating Excess O2 is 3.0~3.5
- SBR-5G has FGR



Dimensions are for reference only. Dimensions and specifications are subject to change without notice.

BURNER SIZE (BHP)	250	300	350	400	500
Width					
Center Line to left side - A (inch)	29.3	28.9	34.0	31.8	31.8
Center Line to right side - B (inch)	34.5	34.5	34.9	41.5	41.5
Height					
Center Line to top - C (inch)	14.7	16.7	18.2	18.2	18.2
Center Line to bottom side - D (inch)	35.0	35.0	35.0	35.0	35.0
Length					
Mounting flange to back of burner - E (inch)	90.7	90.7	101.7	101.7	101.7
Dryoven Depth - F (inch)	7.0	8.0	8.0	9.0	9.0
Shipping Weight					
Approximate Shipping Weight (lb)	2300	2500	2800	3000	3000

SBR-5G
Gas Only
25.2 - 42 MMBtu
600 - 1000 BHP

The ProFire SBR-5 series is designed for a variety of boiler types such as firetubes, heaters, and watertubes. Capable of less than 5 ppm NO_x emissions with FGR, the SBR-5 series features a unique firing head design to achieve controlled combustion, leading to low emissions with 3% O₂. Advanced technology allows the SBR-5 series to offer Low-NO_x, low CO emissions and up to 6:1 turndown on natural gas.



Standard Equipment

- 120/1/60 Control circuit, various motor voltages
- Panel signal lights: power on, main fuel, ignition, and flame failure
- Burner-mounted junction box with remote panel
- Combustion air proving switch
- Main shutoff fuel valves
- Gas-Electric ignition
- Hinged rear-access cover
- Electronic parallel positioning with capacity control
- Top-mounted blower

Series Features

S = STANDARD

O = OPTIONAL

N/A = NOT AVAILABLE

	600	700	800	900	1000
Flame Safeguard	S	S	S	S	S
Self-Check Flame Safeguard	O	O	O	O	O
3600 RPM Combustion Fan	S	S	S	S	S
Full Modulation Firing	S	S	S	S	S
Parallel Positioning System	S	S	S	S	S
Dry Oven	S	S	S	S	S
O ₂ Trim	S	S	S	S	S
Variable Frequency Drive (VFD)	O	O	O	O	O
High and Low Gas Pressure Switches	S	S	S	S	S
Normally Open (N.O.) Vent Valve or Leakage Detection	S	S	S	S	S
Main Gas Regulator and (2) Gas Shutoff Cocks, (2) Automatic Main Shutoff Valves	S	S	S	S	S
Gas Flow Control Valves Mounted on Burner Piping	S	S	S	S	S

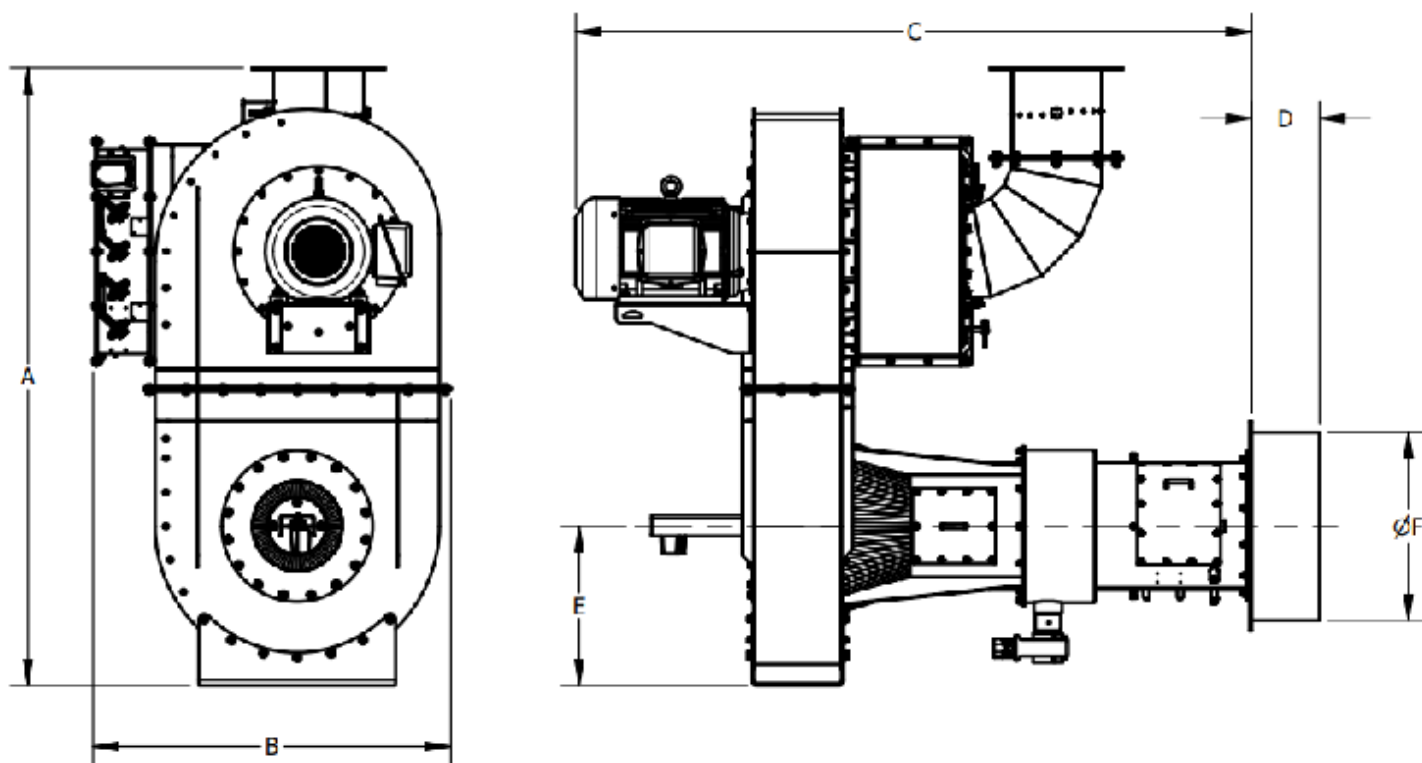
Capacities and Ratings

BURNER MODEL	FRAME SIZE	GAS INPUT (MBH)	BHP @ 80% EFF.	MOTOR HP	GAS PRESSURE REQUIRED (PSI)	RECOMMENDED FURNACE DIAMETER	RECOMMENDED FURNACE LENGTH	FURNACE PRESSURE
SBR5G-252	5	25,200	600	50	5	45	152	5.6
SBR5G-294	5	29,400	700	60	TBD	50	160	5.4
SBR5G-336	5	33,600	800	75	TBD	50	160	7.0
SBR5G-378	5	37,800	900	75	TBD	52	200	3.5
SBR5G-420	5	42,000	1000	75	TBD	52	200	4.1

Notes:

1. For values outside guidelines, connect with factory to evaluate possibilities of usage of SBR-5
2. SBR-5G Elevation is 0~2000
3. SBR-5G Ambient Temperature consists of 60~100 (°F)
4. SBR-5G NOx (ppm, @3% O2) Burning Natural Gas is ≤30

5. SBR-5G NOx (ppm, @3% O2) Burning #2 Fuel Oil is uncontrolled
6. SBR-5G CO (ppm @3% O2) Burning Natural Gas and #2 Fuel Oil is ≤100
7. SBR-5G Turndown Burning Natural Gas is Up to 6:1
8. SBR-5G Operating Excess O2 is 3.0~3.5
9. SBR-5G has FGR



Dimensions are for reference only. Dimensions and specifications are subject to change without notice.

BURNER SIZE (BHP)	600	700	800	900	1000
A	109.1	109.1	115.1	115.1	115.1
B	63.4	63.4	69.4	69.4	69.4
C	119.6	119.6	125.6	125.6	125.6
D	13.4	13.4	13.4	13.4	13.4
E	28.1	28.1	31.1	31.1	31.1
F	33.3	33.3	35.8	35.8	35.8

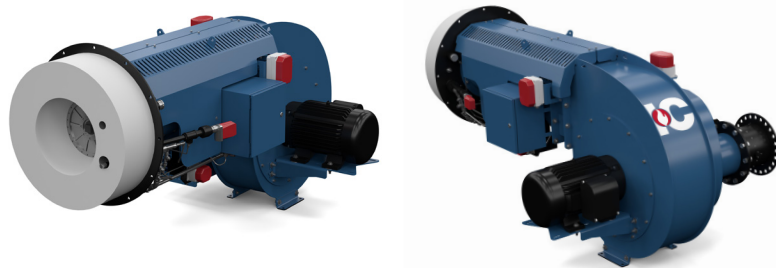
SBR-5LG

8.4 - 21.0 MMBtu

250 - 500 BHP

The SBR-5 series is designed for a variety of boiler types such as firetubes, heaters, and watertubes.

Capable of less than 5 ppm NOx emissions with FGR, the SBR-5 features a unique firing head design to achieve controlled combustion, leading to low emissions with 3% O₂. Advanced technology allows the SBR-5 to offer Low-NOx, low CO emissions and up to 6:1 turndown on natural gas.



Standard Equipment

- 120/1/60 control unit, various motor voltages
- Panel signal lights: power on, main fuel, ignition, and flame failure
- Burner-mounted junction box with remote panel
- Combustion air proving switch
- Main shutoff fuel valves
- Gas-Electric Ignition
- Fuel changeover switch
- Electronic parallel positioning with capacity control

Series Features

S = STANDARD

O = OPTIONAL

N/A = NOT AVAILABLE

	200	250	300	350	400	500
Flame Safeguard	S	S	S	S	S	S
Self-Check Flame Safeguard	O	O	O	O	O	O
3600 RPM Combustion Fan	S	S	S	S	S	S
Full Modulation Firing	S	S	S	S	S	S
Parallel Positioning System	S	S	S	S	S	S
Dry Oven	S	S	S	S	S	S
O ₂ Trim	S	S	S	S	S	S
Variable Frequency Drive (VFD)	O	O	O	O	O	O
High and Low Gas Pressure Switches	S	S	S	S	S	S
Normally Open (N.O.) Vent Valve or Leakage Detection	S	S	S	S	S	S
Main Gas Regulator and (2) Gas Shutoff Cocks, (2) Automatic Main Shutoff Valves	S	S	S	S	S	S
Gas Flow Control Valves Mounted on Burner Piping	S	S	S	S	S	S

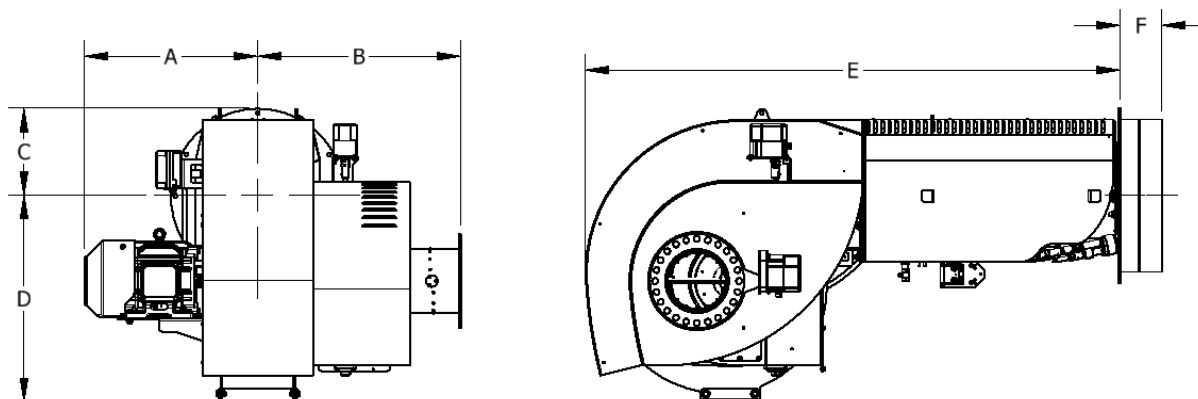
Capacities and Ratings

BURNER MODEL	FRAME SIZE	GAS INPUT (MBH)	BHP @ 80% EFF.	MOTOR HP	GAS PRESSURE REQUIRED (PSI)	RECOMMENDED FURNACE DIAMETER	RECOMMENDED FURNACE LENGTH	FURNACE PRESSURE
SBR5G-84	3	8,400	200	15	5	27	120	3.5
SBR5G-105	3	10,500	250	20	5	34	128	2.7
SBR5G-126	3	12,600	300	25	5	34	134	3.7
SBR5G-147	4	14,700	350	30	5	37	135	3.7
SBR5G-168	4	16,800	400	40	5	37	143	3.6
SBR5G-210	4	21,000	500	40	5	45	146	4.3

Notes:

1. For values outside guidelines, connect with factory to evaluate possibilities of usage of SBR-5
2. SBR-5G Elevation is 0-2000
3. SBR-5G Ambient Temperature consists of 60~100 (°F)
4. SBR-5G NOx (ppm, @3% O2) Burning Natural Gas is ≤30

5. SBR-5G NOx (ppm, @3% O2) Burning #2 Fuel Oil is uncontrolled
6. SBR-5G CO (ppm @3% O2) Burning Natural Gas and #2 Fuel Oil is ≤100
7. SBR-5G Turndown Burning Natural Gas is Up to 6:1
8. SBR-5G Operating Excess O2 is 3.0~3.5
9. SBR-5G has FGR



Dimensions are for reference only. Dimensions and specifications are subject to change without notice.

BURNER SIZE (BHP)	250	300	350	400	500
Width					
Center Line to left side - A (inch)	29.3	28.9	34.0	31.8	31.8
Center Line to right side - B (inch)	34.5	34.5	34.9	41.5	41.5
Height					
Center Line to top - C (inch)	14.7	16.7	18.2	18.2	18.2
Center Line to bottom side - D (inch)	35.0	35.0	35.0	35.0	35.0
Length					
Mounting flange to back of burner - E (inch)	90.7	90.7	101.7	01.7	01.7
Dryoven Depth - F (inch)	7.0	8.0	8.0	9.0	9.0
Shipping Weight					
Approximate Shipping Weight (lb)	2300	2500	2800	3000	3000

SBR-5LG

25.2 - 42 MMBtu

600 - 1000 BHP

The ProFire SBR-5 series is designed for a variety of boiler types such as firetubes, heaters, and watertubes. Capable of less than 5 ppm NOx emissions with FGR, the SBR-5 series features a unique firing head design to achieve controlled combustion, leading to low emissions with 3% O2. Advanced technology allows the SBR-5 series to offer Low-NOx, low CO emissions and up to 6:1 turndown on natural gas.



Standard Equipment

- 120/1/60 Control circuit, various motor voltages
- Panel signal lights: power on, main fuel, ignition, and flame failure
- Burner-mounted junction box with remote panel
- Combustion air proving switch
- Main shutoff fuel valves
- Gas-Electric ignition
- Hinged rear-access cover
- Electronic parallel positioning with capacity control
- Top-mounted blower

Series Features

S = STANDARD

O = OPTIONAL

N/A = NOT AVAILABLE

	600	700	800	900	1000
Flame Safeguard	S	S	S	S	S
Self-Check Flame Safeguard	O	O	O	O	O
3600 RPM Combustion Fan	S	S	S	S	S
Full Modulation Firing	S	S	S	S	S
Parallel Positioning System	S	S	S	S	S
Dry Oven	S	S	S	S	S
O ₂ Trim	S	S	S	S	S
Variable Frequency Drive (VFD)	O	O	O	O	O
High and Low Gas Pressure Switches	S	S	S	S	S
Normally Open (N.O.) Vent Valve or Leakage Detection	S	S	S	S	S
Main Gas Regulator and (2) Gas Shutoff Cocks, (2) Automatic Main Shutoff Valves	S	S	S	S	S
Gas Flow Control Valves Mounted on Burner Piping	S	S	S	S	S

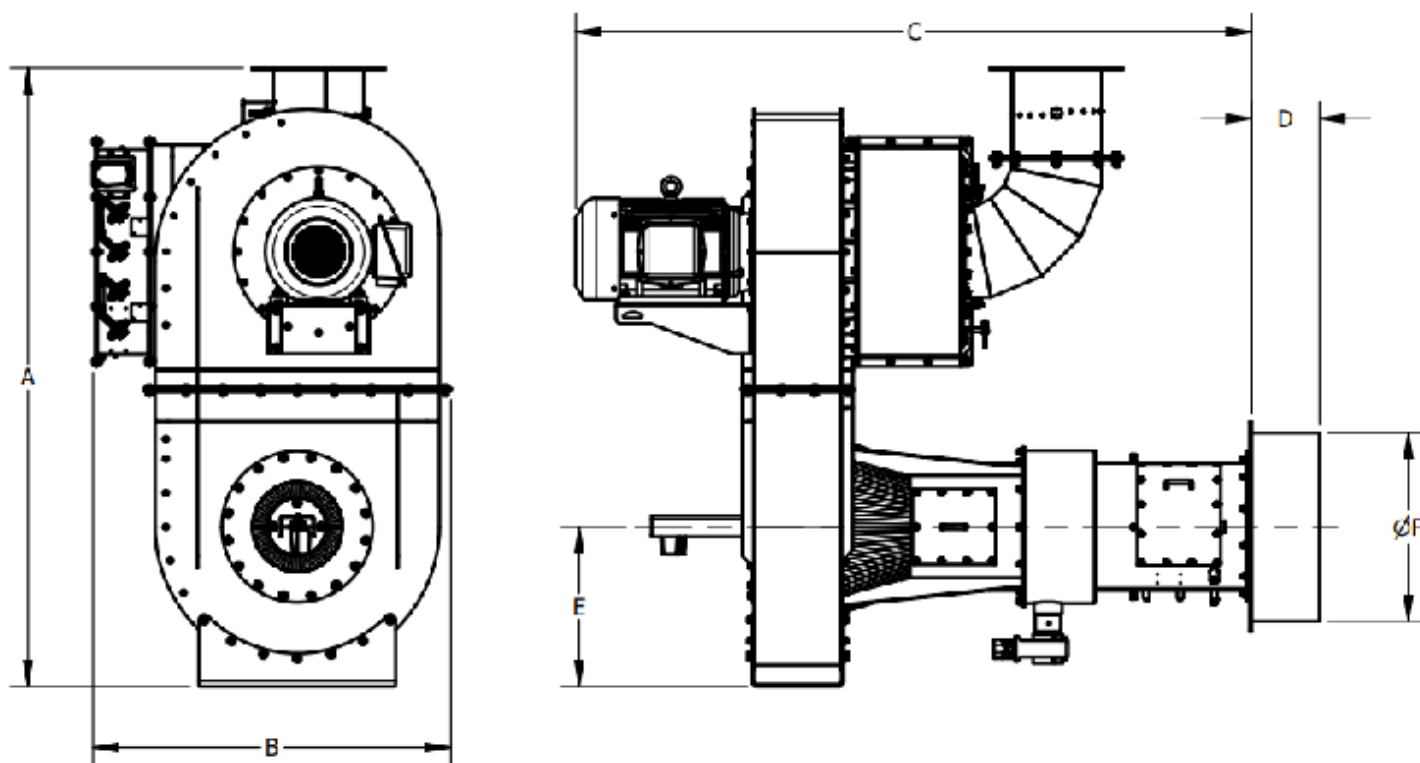
Capacities and Ratings

BURNER MODEL	FRAME SIZE	GAS INPUT (MBH)	BHP @ 80% EFF.	MOTOR HP	GAS PRESSURE REQUIRED (PSI)	RECOMMENDED FURNACE DIAMETER	RECOMMENDED FURNACE LENGTH	FURNACE PRESSURE
SBR5G-252	5	25,200	600	50	5	45	152	5.6
SBR5G-294	5	29,400	700	60	TBD	50	160	5.4
SBR5G-336	5	33,600	800	75	TBD	50	160	7.0
SBR5G-378	5	37,800	900	75	TBD	52	200	3.5
SBR5G-420	5	42,000	1000	75	TBD	52	200	4.1

Notes:

1. For values outside guidelines, connect with factory to evaluate possibilities of usage of SBR-5
2. SBR-5G Elevation is 0~2000
3. SBR-5G Ambient Temperature consists of 60~100 (°F)
4. SBR-5G NOx (ppm, @3% O2) Burning Natural Gas is ≤30

5. SBR-5G NOx (ppm, @3% O2) Burning #2 Fuel Oil is uncontrolled
6. SBR-5G CO (ppm @3% O2) Burning Natural Gas and #2 Fuel Oil is ≤100
7. SBR-5G Turndown Burning Natural Gas is Up to 6:1
8. SBR-5G Operating Excess O2 is 3.0~3.5
9. SBR-5G has FGR



Dimensions are for reference only. Dimensions and specifications are subject to change without notice.

BURNER SIZE (BHP)	600	700	800	900	1000
A	109.1	109.1	115.1	115.1	115.1
B	63.4	63.4	69.4	69.4	69.4
C	119.6	119.6	125.6	125.6	125.6
D	13.4	13.4	13.4	13.4	13.4
E	28.1	28.1	31.1	31.1	31.1
F	33.3	33.3	35.8	35.8	35.8



351 21st Street, Monroe, WI 53566 USA
608.325.3141 · info@ind-comb.com
ind-comb.com

Printed in the USA
©2024 Industrial Combustion, Inc
IC-SA-1810
3/2024